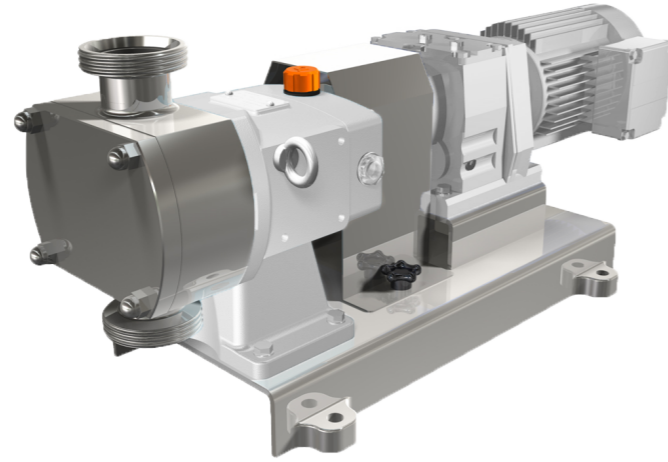


OBEL Lobe Pumps

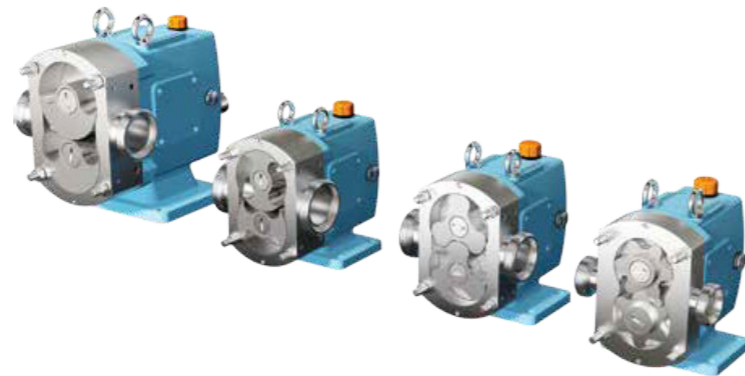
- Max. Capacity: 100m³/h
- Max. Differential Pressure: 20 bar
- Max. Viscosity: 440.000 cSt
- Temperature Range: -15°C to +150°C



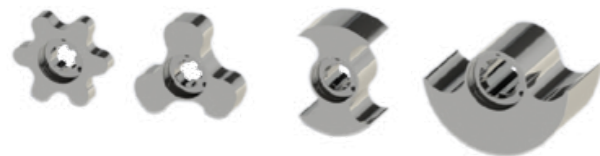
OBEL series pumps have been specially designed to make dismantling faster and easier, whether it's for inspection, cleaning or maintenance taking care of your lobe pump has never been easier.

The forward-seal position places the seals in direct contact with CIP fluids. Superior seal cleanliness maximizes seal life and minimizes seal flaking that could cause product contaminations. Because the seals are located directly behind the rotors, areas of product entrapment are eliminated for superior hygienic performance.

Unique front loading seal design gives faster maintenance, easier cleaning and less downtime. The only dismantling required is the front cover, the rotors and seals, all of which can be removed without taking the pump away from the installation.



All four lobe types can be used universally in all pump heads.



The lobe types according to application: Single Wing, Bi-Wing, Tri Lobe, Multi Lobe

Features and Advantages

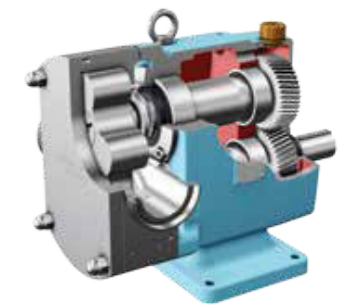
Three kind of gear boxes with seven kinds of pump models.
 All wetted parts manufactured from stainless steel 316.
 Heating / Cooling jackets available on all sizes.
 DIN11851 connection supplied as standard, this is machined from a solid block stainless steel 316 meaning no welds on the pump head.
 Single seal which can be modified to a double type (flushing) with a minimum of additional part.
 Horizontal or vertical ports on all pump sizes.
 Bi-directional operation.
 Inlet / outlet connection ports can be offered with DIN 11851, tri clamp, RJT or flange.
 Lobe type can be offered with single wing, bi-wing, tri-lobe and multi lobe according to application
 and all are universal to suit any pump head.
 Clearances can be machined to suit any viscosity.
 Inlet port can be rectangular for high viscosity applications.



Flange Connection



Heating Jacket on pump head



OBEL Series	Model	Capacity			Standard Connection Diameter		Max. Pressure		Max. Speed
		Liter 1 rev.	Int Galon 100 rev.	Us Galon 100 rev.	mm	Inches	PSI	Bar	rpm
1	OBEL 125	0.05	1.10	1.32	25	1	300	20	1000
	OBEL 140	0.12	2.64	3.17	40	1.5	175	12	800
	OBEL 150	0.21	4.61	5.54	50	2	115	8	800
2	OBEL 250	0.4	9.01	10.81	50	2	175	12	700
	OBEL 265	0.62	13.63	16.35	65	2.5	115	8	700
3	OBEL 380	1.02	22.42	26.90	80	3	175	12	600
	OBEL 3100	1.44	31.65	37.98	100	4	115	8	600