



topflo[®]

» All about your flow[™]

PRODUCT PORTFOLIO

We offer a wide pump portfolio to the UK for almost any application and installation, including bespoke pumping systems designed by our in-house Engineering Team.

2021 Rev.1

tapflopumps.co.uk

02380 252 325 | sales@tapflopumps.co.uk

CONTENTS

- About us / Certifications & Industries 3
- Tapflo Low Energy Pumps 4
- Tapflo Air Operated Diaphragm Pumps / Electric Diaphragm Pumps 5
- Tapflo Centrifugal Pumps 6
- Self Priming Centrifugal Pumps 7
- Tapflo Peristaltic Pumps 8
- Salvatore Robuschi Centrifugal Pumps 9
- Self Priming Flexible Impeller / Hygienic Process Pumps 10
- Magnetically Driven Centrifugal Pumps 11
- Progressive Cavity Pumps 12
- Progressive Cavity Pumps / Jump Pumps 13
- Yildiz Industrial Gear Pumps 14
- Sanitary Process Equipment 15
- SLES Mixing & Dilution Unit 16
- Bespoke Pumping Systems 17
- Systems & Accessories 18
- Full scope of Supply 19

TAPFLO GROUP

Leading pump manufacturer and supplier of the highest quality process pumps for various hygienic and industrial applications.

**COMMITMENT
SIMPLICITY
QUALITY**



TAPFLO UK

Tapflo UK Ltd was established in 1998 and has been working within the UK to supply process pumps to the industrial, food and beverage, chemical, petrochemical, energy, water treatment, surface treatment, pharmaceutical and nuclear sectors ever since.

As a well-established organisation, we pride ourselves on our attention to detail and high quality of products and services. By working closely with our customers and supply partners, we can provide comprehensive solutions to all fluid and powder processing applications.

Here at Tapflo UK, we have grown to become a leading supplier of industrial and hygienic process pumps and systems, spearheading energy conservation issues through the launch of our LEAP Technology (Low Energy Air Pump).

QUALITY CERTIFIED

At Tapflo, we believe that quality is one of the highest values, both for our customers as well as our employees. Many of our products comply with EC ATEX directives for equipment intended for use in explosive and hazardous environments. The Aseptic Series is EHEDG certified and the Pharmaceutical Series has USP VI and EC 1935/2004 approval.

All of our products are CE marked, followed by our comprehensive instruction manuals. Tapflo's manufacturing process is certified according to ISO 9001:2015.



INDUSTRIES

- CHEMICAL**
- WATER TREATMENT**
- MECHANICAL**
- PULP AND PAPER**
- HYGIENIC**

TAPFLO LOW ENERGY AIR PUMP

Here at Tapflo UK, we are at the forefront of the energy saving revolution with the development of the LEAP (Low Energy Air Pump) Technology. Airflow through the pump is controlled by a fundamentally different principle to vastly reduce the air consumption of our diaphragm pumps from the industry standard of 1.2 Bar to 0.2 Bar starting pressures!



Why LEAP?

- Ultra low starting pressure – just 0.2 Bar!
- Lower operational cost and reduced air consumption
- Reduce your carbon footprint
- Full control & feedback to PLC – signal allows external monitoring of the pump in process
- Low noise and pulsation
- Retrofit to all Tapflo diaphragm pumps



Why choose Tapflo for your Air Operated Double Diaphragm Pump?

- Run dry and dead head without damage – no need for dry run protection devices
- Infinitely variable flow control – achievable by adjusting the air flow to the pump
- Air Operated – intrinsically safe & simple to install, no special training required
- Self-priming up to 9m, when wetted
- Solids handling & resistant to abrasion
- Can handle both thin and viscous fluids
- Available in a wide variety of materials to suit almost any fluid
- Sealless – no mechanical seal, which is the weakest point on any type of pump
- Decent volumetric efficiency – enables use in batching & metering applications
- 70% less parts than the industry standard, meaning less downtime & lower maintenance costs
- Numerous design variations & accessories such as Barrier, Twin, Powder, Filter Press, Drum, Ball Lifting, Flap Valve & Integrated Flange

TAPFLO AIR OPERATED DIAPHRAGM PUMPS

Why choose Tapflo for your Air Operated Double Diaphragm Pump?

- Simple operating principle, compact & reliable design
- Our PE & PTFE pumps are machined from Solid Block rather than Injection Moulded
- Variety of materials (PE, PTFE, Aluminium, Cast Iron & Stainless Steel AISI 316L)
- 70% less parts than many other pumps on the market, meaning less down time & lower costs for spares, with simple maintenance procedures guaranteed
- Run dry and dead head without damage – no need for dry run protection devices
- Infinitely variable flow control – achievable by adjusting the air flow to the pump
- Air Operated – intrinsically safe & simple to install, no special training required
- Self-priming up to 9m, when wetted
- Solids handling & resistant to abrasion
- Can handle both thin and viscous fluids
- Sealless – no mechanical seal, which is the weakest point on any type of pump
- Decent volumetric efficiency – enables use in batching & metering applications
- Numerous design variations & accessories such as Barrier, Twin, Powder, Filter Press, Drum, Ball Lifting, Flap Valve & Integrated Flange



HDPE & PTFE

- Solid Block
- 1/4" – 3"
- 11 – 820 LPM
- 8 Bar Pressure



Sanitary

- 316L Stainless
- 1.2 Ra as standard
- 1" – 3"
- 28 – 820 LPM
- 8 Bar Pressure



Aluminium

- Cast Aluminium
- 1/2" – 3"
- 26 – 820 LPM
- 8 Bar Pressure



TAPFLO ELECTRIC DIAPHRAGM PUMPS

- Can be run dry with no damage
 - Has the option to self-prime from a dry suction pipe
 - No hydraulic fluid required meaning clean and easy maintenance with no risk of leakage
 - Low spares cost and few components
- The pump is suited to a range of industries and applications, including:
- Chemicals
 - Surface Conditioning
 - Water treatment
 - Hygienic/sanitary
 - Mechanical
 - Available in HDPE/PTFE, Metal & Sanitary



Electric Diaphragm Pump

TAPFLO CENTRIFUGAL PUMPS

- Available in Stainless Steel AISI 316L, PP & PVDF, both horizontal & vertical
- Robust designs in Glass Blasted/Electropolished S316L or injection moulded PP & PVDF
- Simple construction from at least 19 components
- Low cost & delivery times compared to equivalents on the market
- Low maintenance
- Can be modified for a variety of applications without having to replace the pump

Stainless Immersion



- Stainless Steel
- 1 – 34m³/hr
- 1 – 30m head
- Sealless
- Available in plastic

CTX High Performance



- Stainless Steel AISI 316L Ra<0.8
- 1 - 125m³/hr
- 1 - 88m head
- Max 120°C
- Industrial & Hygienic

CTS Self-Priming



- Stainless Steel
- Industrial & Hygienic
- 1 – 50m³/hr
- 4.5m suction lift
- 1 – 47m head
- Max 90°C

CTI Industrial



- Stainless Steel
- 1 – 60m³/hr
- 2 or 4 pole
- 1 – 47m head
- Max 180°C

CTH Hygienic



- Stainless Steel
- 1 – 60m³/hr
- 2 or 4 pole
- 1 – 47m head
- Max 180°C

CTM Mag Drive



- PP-GF or PVDF
- 1 – 29m³/hr
- 1 – 21m head
- Max 90°C
- Max 10 Bar

SELF-PRIMING CENTRIFUGAL PUMPS

BY BBA



- Flows to 1200 m³/hr
- Head to 70 mwc
- 20 different pump sizes to best match duty requirements
- Rapid suction lift to 7 mwc
- Mechanical seal grease lubricated to aid long suction runs.
- Capable of handling fluid with occasional solids
- Available in a range of metals (bronze/stainless steel/cast iron)
- Proven, robust, quality design
- ATEX (EX II 2G IIB T4) compliant units available on request
- Check valve on suction to eliminate back flow
- Drive options including engine driven if required.

CTM-IBC Portable Pump

All-in-one system designed by Tapflo UK featuring:

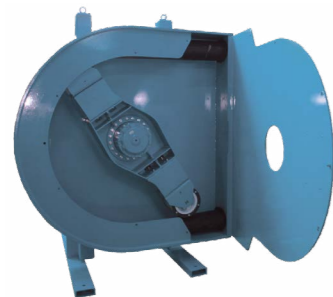
- CTM Mag Drive Centrifugal pump
- Machined solid-block portable frame
- Integrated drip-tray
- Carry handles
- Easy push fit connections
- On/off switch
- Control Valve

This solution can be tailored to your business needs & is available in a range of sizes.



TAPFLO PERISTALTIC PUMPS

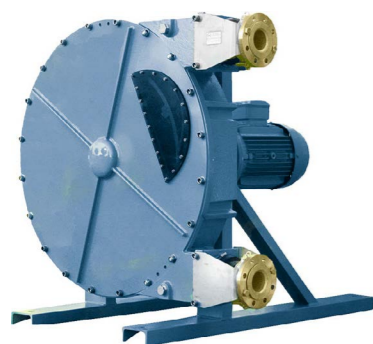
- Available in 21 different sizes that provide flow rates of 0 to 200m³/hr
- Durable construction of ductile iron & steel
- Self-priming up to 9.8 meters at sea level
- High volumetric accuracy (up to 99.5%) for sampling & metering applications
- Dry-run capability allows tank and line stripping
- Sealless design eliminates leaks, contamination & wear problems
- Reversible operation allows pumping in both directions
- Low maintenance requirements of the hose and shoes
- Low operating noise level <70 dB at 1 meter
- 30% less casing bolts, so quicker to remove and replace during maintenance



PTX Roller Design

The Pump can handle high pressures and comes in 21 different sizes which means we have a lot to offer!

- 60,000 cPs
- Up to 150m³/hr
- 15 Bar
- Max 135°C
- Roller Design –Non Lubricated



PT High Pressure

Ideal for handling fragile and shear sensitive fluids, the pump has been designed for easy dismantling, meaning minimal downtime and ease of use for operators.

- Up to 150m³/hr
- 60,000 cPs
- 15 Bar
- Max 135°C
- CIP options available



PTL Low Pressure

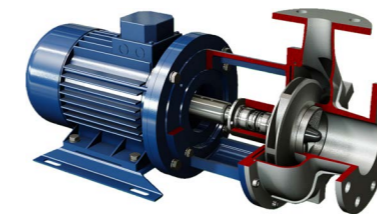
Designed for low flow batching & metering applications where accurate flows up to 10m³/hr and pressures up to 4 Bar are required.

- Up to 10m³/hr
- 15,000 cPs
- 4 Bar
- Max 135°C



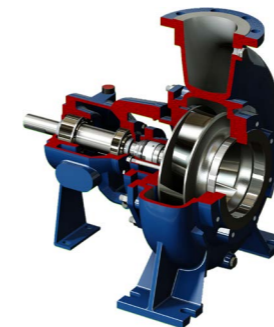
SALVATORE ROBUSCHI CENTRIFUGAL PUMPS

Tapflo are proud to be the UK supplier of Salvatore Robuschi Centrifugal Pumps. Their range predominantly focuses on Heavy Duty Centrifugal Pumps with closed, semi-open & channel impellers built in accordance with ISO 2858/5199 norms as well as units fitted with Recessed Vortex Impellers for effective solids passage. The complete range can be built in Cast Iron, Stainless Steel (various grades) as well as special alloys such as Duplex & Super Duplex Stainless Steel & Hastelloy B & C.



Close Coupled (Acc. ISO 5199 Dimensions)

- Up to 300 m³/hr & Max Head: 60m
- +120°C
- AISI 316, Threaded & Flanged (Industrial & Hygienic)
- Horizontal Close Coupled



ISO 2858/5199 Process Centrifugal

- Up to 2400 m³/hr & Max Head: 140m
- +220°C (Std.)
- AISI 316/Cast Iron, Flanged acc. to all standards
- Bareshaft, Long Coupled, Close Coupled, Lantern Bracket



Water Pumps

- Up to 480 m³/hr & Max Head: 180m
- +130°C
- AISI 316, Cast Iron & Brass
- Threaded & Flanged to all standards
- Bareshaft, Long Coupled, Close Coupled, Lantern Bracket



ISO 2858/5199 Vertical Immersion & Cantilever

- Up to 1400 m³/hr & Max Head: 145m
- +500°C (std.)
- AISI 316 & Cast Iron, Threaded & Flanged acc. to all standards
- Up to 6m in length, Lubrication by pumped fluid, external source or fluid filled in column

SELF-PRIMING FLEXIBLE IMPELLER PUMPS

- Can handle thin and viscous fluids (up to 50,000 cPs), as well as solids in suspension (up to 25mm)
- Capable of discharge pressures up to 4 Bar
- Flow rates up to 1200 l/min
- Maximum temperatures up to 120°C

Miniverter



- Stainless Steel 316 construction
- On/off reverse switch
- Potentiometer for variable speed
- Single and three phase
- Max head 2.8 Bar
- Max flow 5000 l/hour

Close Coupled EP



- 304 or 316 Stainless Steel construction
- On/off reverse switch
- 12v, 24v, single phase and three phase
- Max head 2.8 Bar
- Max flow 36 m³/hour

Gearbox Drive



- 304 or 316 Stainless Steel construction
- Three phase
- Max pressure 3.6 Bar
- Max flow rate 63m³/hour

HYGIENIC PROCESS PUMPS

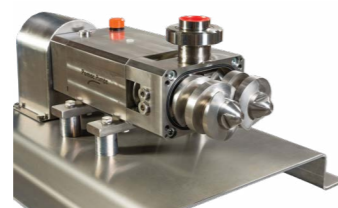
We are the UK exclusive distributor for Pomac Pumps who manufacture hygienic process pumps including Lobe, Twin Screw and Hygienic Centrifugal Pumps typically for the food, beverage, pharmaceutical and cosmetic industries. All units are fully FDA and EHEDG certified.

PLP Sanitary Lobe Pump



- Up to 110m³/hr
- 15 Bar max pressure
- 1,000,000 cPs
- Max 140°C
- 60mm max solids
- 3/4" – 4"
- Full Stainless Steel Construction

PDSP Sanitary Self-Priming Double Screw Pump



- Up to 95m³/hr
- Max 140°C
- 1,000,000 cPs max
- 16 Bar max pressure
- 2" – 5"
- Max solids passage of 40mm
- Full Stainless Steel Construction

CPC & CPC-ZA Sanitary Centrifugal Pumps



- 500m³/hr (CPC) & 350m³/hr (CPC-ZA)
- 15 Bar max pressure as standard (40 Bar on request)
- 500cPs
- 150°C
- Max suction lift 6m
- Max solids 10mm

MAGNETICALLY DRIVEN PUMPS

Working closely with our partner, Gemme Cotti, Tapflo UK are pleased to offer the below ranges to the UK market. Gemme Cotti are an Italian Pump Manufacturer who have been manufacturing Mag Drive Pumps since 1992.

Complete Range Available ATEX Rated



Mag Drive Centrifugal Pump Range

The range has been designed to promote maximum safety by having no risk of leakage, as well as increasing reliability and efficiency.

- Up to 130 m³/hr
- Max Head: 48m.w.c
- Max Temp: 90°C
- Self priming available
- Available in AISI 316, PP/ PVDF



Mag Drive Rotary Vane Pump Range

Available in Polypropylene, PVDF or Stainless Steel, the pump and motor is coupled together with magnets to ensure a sealless design which removed the risk of leakage.

- Max Flow: 2.1 m³/hr
- Max Head: 13Bar
- Max Temp: 200°C
- Self priming available
- Available in AISI 316, PP/PVDF



Mag Drive Regenerative Turbine Pump Range

The seal-less design and high-grade material mean that the range is ideal for handling highly corrosive fluids whilst ensuring the pump can be operated safely.

- Up to 9 m³/hr
- Max Head: 80m.w.c
- Max Temp: 160°C
- Handled Entrained Gasses
- Self priming available
- Available in AISI 316, PP/PVDF



PROGRESSIVE CAVITY PUMPS

Tapflo's Diamond Series Progressing cavity pumps are characterised by a modular design covering numerous models and sizes enabling capacities up to 420 m³/hr and discharge pressures up to 48 bar Numerous Rotor/Stator & Sealing Combinations to match almost any application.

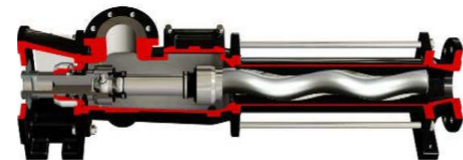
- Uniform Flow which is proportional to the speed of rotation
- Suitable for low NPSHa & Suction Lift (up to 8 m) Applications – Size, No of Stages & Speed-dependent
- High Discharge Pressures, up to 48 Bar (6 Bar / Stage). Units are available with 1 – 8 stages.
- Can pump Shear Sensitive & Heterogeneous Fluids containing Gases, Solids, Abrasive Particulates & Fibrous Materials
- Can pump both Low and High Viscosity Fluids
- Low Pulsation with Minimal Tensile Strain on the process media

Hygienic Series



- Self Priming to 7 m
- CIP & SIP Suitable
- EHEDG & 3A Compliant Design
- All Hygienic Connection Types available
- Numerous Rotor / Stator & Sealing
- CIP connection built into pump body
- Open or closed pin joint depending on variant
- Can be Close Coupled Orientation (DX) or Flexibly Coupled Orientation with Bearing Bracket Support (JX)
- Can be supplied in Stainless Steel AISI 304 on demand
- Suitable for both CIP & SIP Cleaning & Sterilising procedures

Progressing Cavity Pumps DN & JN Flanged Industrial Series



- Max Flow Rates: 110 m³/hr
- Max Pressure: 24 Bar (Std) / 48 Bar for K8 Variant
- Temperature Range: -40°C to +150°C
- Can pump both Low and High Viscosity Fluids
- Low Pulsation with Minimal Tensile Strain on the process media
- Self Priming to 7m
- API 676 Compliant
- Available in Cast Iron
- AISI 304 & 316 & Super Duplex Stainless Steel (F55)

DV Vertical Pump Series



- Short & Long Versions available
- Immersion versions of the DN / JN series
- Ideal solution for pumping from wells or tanks.
- Stainless Steel AISI 304/316

Wobble Pump Series



- Self-Priming to 4 m Flows up to 14 m³/hr
- Max Pressure: 4 Bar
- (6 Bar Intermittent)
- Temperature Range: -40°C to +80°C
- Available Bareshaft
- Available in either Cast Iron, Stainless Steel (AISI 304 & 316)
- Adaptors can be supplied on request
- Close coupled & long coupled
- Integral pressure relief valve available

Hopper Pumps



- Ideal for handling high viscosity fluids with a high solid content up to 40%.
- Open hopper with hydraulic auger screw feed onto Stator / Rotor Housing
- Numerous design & build options to cater to specific applications.
- Used for processing of mediums with elevated viscosities & high solids content
- Can be delivered in either close coupled or bearing housing supported variations
- Adapted to suit installation requirements on request.

JUMP PUMPS

The Jump Pump range is capable of flows up to 140 m³/hr and pressures up to 12 Bar and available in materials ranging from Ductile Cast Iron to Stainless Steel AISI 316L Jump's range of Rotary Positive Displacement Pumps are ideally suited to a wide range of applications for thin to semi-viscous fluids within a plethora of industries. All available ATEX Rated & with FDA Certification.

JV Series Vane Pumps



- Up to 140m³/hr
- Up to 12 Bar
- -10°C to +250°C
- Flanged, Clamp, SMS, Macon, RJT, CAM Lock, DIN, Threaded
- Optional Integrated Double By-Pass and heating jacket
- Stainless Steel AISI 316L
- Also available in Ductile Iron & Steel
- Self-Priming, Dry Running Capabilities

JEB Series Sealless Eccentric Disc Pumps



- Up to 42m³/hr
- Up to 10 Bar
- -5°C to +150°C
- Flanged, Clamp, SMS, Macon, RJT, CAM Lock, DIN, Threaded
- Patented Design
- Sealless and Self Priming
- Stainless Steel AISI 316L
- CIP & SIP Suitable up to 10 Bar
- No Retention Zones

JE Series Eccentric Disc Pumps

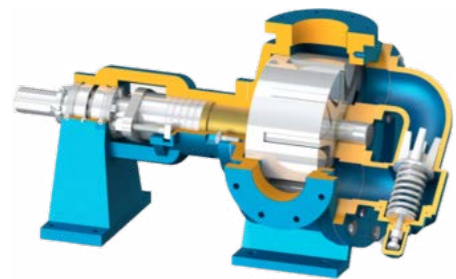


- Up to 96 m³/hr
- Up to 10 Bar
- -10°C to +250°C
- Self-Priming, Reversible, Dry Running Capabilities
- Available in Ductile Iron, Steel, Stainless Steel AISI 316L & Stainless Cast Iron
- Optional Integrated Double By-Pass & Heating Jacket
- Strong Vacuum & Compression Capability

YILDIZ INDUSTRIAL GEAR PUMPS

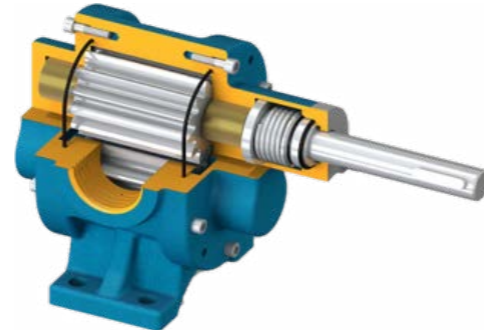
Yildiz Pompa is an industry leading manufacturer with over 40 years' experience in the design and development of industrial gear & lobe pumps for the transfer of viscose and semi-viscose fluids. ATEX Rated available on request.

Internal Eccentric Gear Pumps



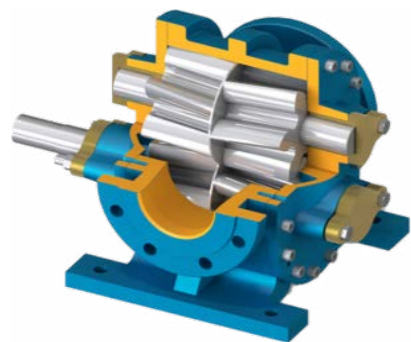
- Up to 250 m³/hr
- Up to 200°C
- Max head up to 15 Bar
- Available in Cast Iron, Ductile Cast Iron, Cast Steel, AISI 304 & 316, Close & Long Coupled Designs

Modular External Gear Pumps



- Up to Up to 7 m³/hr
- Up to 30 Bar
- Up to 100°C
- Available in Cast Iron, Cast Steel, Steel, AISI 304 & 316, Long Coupled Design

Helical External Gear Pumps



- Up to 320m³/hr
- Max Head 15 Bar
- Up to 350°C
- Stainless Steel AISI 304/316
- Mechanical Seal Design
- Available in Cast Iron
- Ductile Cast Iron, Cast Steel, AISI 304 & 316, Long Coupled Design

Mag Drive Internal Eccentric Gear Pumps



- Up to 55 m³/hr
- Max Head 12 Bar
- Max Temp of 250°C
- Available in Cast Iron, Ductile Cast Iron, Cast Steel, AISI 304 & 316, Long Coupled Design
- Sealless Mag drive
- Stainless steel AISI 304/316

SANITARY PROCESS EQUIPMENT

Tapflo are proud to supply a wide range of Sanitary Valves made of forged 304L and 316L stainless steel. All our valves are 3A and FDA certified for use within the food and beverage industries. They are also USP Class VI certified for the pharmaceutical industry.

Sanitary Ball Valve



- Material: EPDM/PTFE, FPM/PTFE, HNBR/PTFE, VMQ/PTFE
- Size: DN25 - DN100, 1" - 4"
- Max. line pressure: 10 bar (145 psi)
- Supply pressure for air actuator: 6 bar (87 psi)
- Sterilisation temperature: 135°C (284°F)

Single Seat Valve



- Available in on/off, changeover and tank-outlet versions
- 304L/316L Stainless Steel
- PTFE & FDA EPDM seals as standard
- 3A & FDA certified

Line Components



- Sealing material: Sight Glasses: PTFE, VMQ; Filters: EPDM, HNBR, VMQ, FPM
- Size: Sight Glasses & Filters: DN25 - DN100, 1" - 4"
- Max. line pressure: Sight Glasses: 10 bar; Filters: 8 bar

Butterfly-Valve



- Polished to Ra<0.8µm
- Range of seal materials to suit your application
- Available with or without a handle (manual/actuated)

SLES MIXING & DILUTION UNIT

Continuously prepare concentrated SLES solution with the Tapflo Mixing and Dilution Unit for full control over your installation and maximum efficiency with this simple design.

Dilute SLES concentration from 70% to 27% as part of your process line. Tapflo's solution significantly reduces costs associated with SLES by diluting on your site.

Featuring a Progressive Cavity Pump and Centrifugal Pump with a range of control accessories and a 7" touchscreen to monitor the mixing and dilution process.

- Flexible with design to meet customer requirements
- Complete system
- Simple and user-friendly control system
- Competitive pricing
- Delivered in up to 10 working weeks
- On-site or over the phone start-up assistance



BESPOKE PUMPING SYSTEMS

Tapflo's innovative Engineering Department was created for the sole purpose of providing bespoke turnkey pumping systems to suit individual customer needs across all industries. We have the combined experience of our UK design team as well as our engineering facility in Poland.

Benefits of using our Engineering Department

Our bespoke turnkey systems can range from a simple trolley with an on/off switch to a complex site installation package with multiple pumps, pipework, control systems and storage vessels.

We can supply systems that are built to Industrial / Chemical & Hygienic standards, as well as safe area & ATEX rated along with a plethora of supporting testing & certification to ensure that our systems are fully accredited to industry standards and customer requirements.

Choosing to use our engineering department for your bespoke turnkey solution will provide you with major benefits compared to designing in-house. By buying an entire system you will be provided with cradle to grave support by the engineering team which removes any complexity with system integration from multiple suppliers as well as providing a single point of contact for troubleshooting and warranty requirements.

Our Engineering Department are conscious that no system is the same and will engage you right from the start to ensure that the product meets your requirements as well as keeping you informed throughout the process, from initial engagement meetings to install.

Not only can our engineering department offer pumps on skids or drip trays but they are fully capable of providing bespoke electrical or pneumatic control panels for the systems in question as well as supplying all instrumentation that you may require.

Ancillary equipment available:

Tapflo's engineering departments designs are bolstered by a host of fluid & air ancillary equipment from some of the best suppliers in the market, the list below states our most popular ancillary equipment, others are available (give us a call and test our us)

- Flow sensors (turbine, magnetic, oval gear etc.)
- Filters (Y strainers to self cleaning auto-switching duplex basket strainers)
- Level sensors (radar, ultrasonic or capacitive)
- Pressure sensors
- Flow meters
- Batch controllers
- Sight glasses
- Sample valves
- Actuated valves
- Pressure regulating valves
- Dampeners
- Suction & Discharge hoses



Example: Air powered 200l resin transfer trolley system

SYSTEMS & ACCESSORIES

Tapflo UK offer a wide range of Pneumatic Control Systems and accessories. These include level controls, batch controls, guardian system (barrier, dry run and dead head protection), life counters, start/stop and many more including all bespoke systems and panels.

Tapflo UK Designed & Manufactured Diaphragm Pump Controls:



Pulsation Dampeners

Tapflo's Pulsation Dampener for AOD Pumps works actively with compressed air and a diaphragm, automatically setting the correct pressure to minimise the pulsations.



Hose Assemblies

Tapflo UK can supply flexible hose assemblies and fittings which are custom made for a wide variety of applications and industries.

Fittings, Adaptors & Valves

To compliment our hose assemblies, we can also supply the affiliated fittings and adaptors to fit to your hose or pump system. We can supply these in Brass, Aluminium, Stainless Steel, Nylon & Glass Reinforced PP (Polyglass).

The Fitting & Adaptor types available, but not limited to, are as follows:

- CAM Locks, IBC & Drum Fittings
- BSP/NPT M Threaded Fittings
- Hygienic – (RJT, Tri-Clamp, SMS etc.)
- ANSI/DIN Flanges & Universal Flange Adaptors
- Expansion Bellows, Expansion Joints & Anti-Vibration Couplings
- Quick Release & Dry Break Couplings
- All types of valves to suit any application
- Flow meters of all types and sizes



FULL SCOPE OF SUPPLY

Tapflo UK offer more than just diaphragm pumps; we are all about your flow! As a result, we have an extensive range of the below pumps and services to suit a variety of applications.

Pumps we manufacture and supply:

- Diaphragm Pumps
- Mag Drive Pumps
- Powder Pumps
- Industrial Centrifugal pumps, surface mounted & immersible with closed, semi-open, channel & recessed vortex impellers
- Fully Submersible Pumps
- Hygienic & Industrial Lobe Pumps
- Hygienic Twin Screw Pumps
- Hygienic Centrifugal Pumps
- Peristaltic Hose Pumps
- Dosing Pumps and systems
- Flexible Impeller Pumps
- Piston Pumps
- Clean & Dirty Water Pumps
- Marine Pumps
- Progressing Cavity Pumps & Progressive Cavity Booster sets
- Side Channel and Liquid Ring Pumps
- Gear & Vane Pumps
- Eccentric Disc Pumps
- Custom built booster sets

Services

- Bespoke pneumatic & electric control gear & accessories
- Energy saving accessories to compliment pumps
- H&S accessories to protect the pump, product and most importantly the end user
- Service and PPM (pre-planned maintenance) contracts
- Fully qualified pump engineers
- Dedicated in-house design and manufacturing team for bespoke applications
- Full range of case studies, reference sites, photos & videos available on request





topflo[®]

» All about your flow[™]