

# tapflo<sup>®</sup>

## LOBE PUMPS

Our Lobe Pumps, offering self-priming abilities when wetted, are ideal for handling slurries, pastes & fluids containing solids, preserving product quality through gentle pumping. Reaching temperatures up to 140°C, these pumps support CIP & SIP, with EHEDG-certified & FDA-approved variants available for the utmost level of sanitation and hygiene.



## OVERVIEW OF LOBE PUMPS

Our Lobe Pumps, offering self-priming abilities when wetted, are ideal for handling slurries, pastes & fluids containing solids, preserving product quality through gentle pumping. Reaching temperatures up to 140°C, these pumps support CIP & SIP, with EHEDG-certified & FDA-approved variants available for the utmost level of sanitation and hygiene.

### Industrial Pumps

### Hygienic Pumps

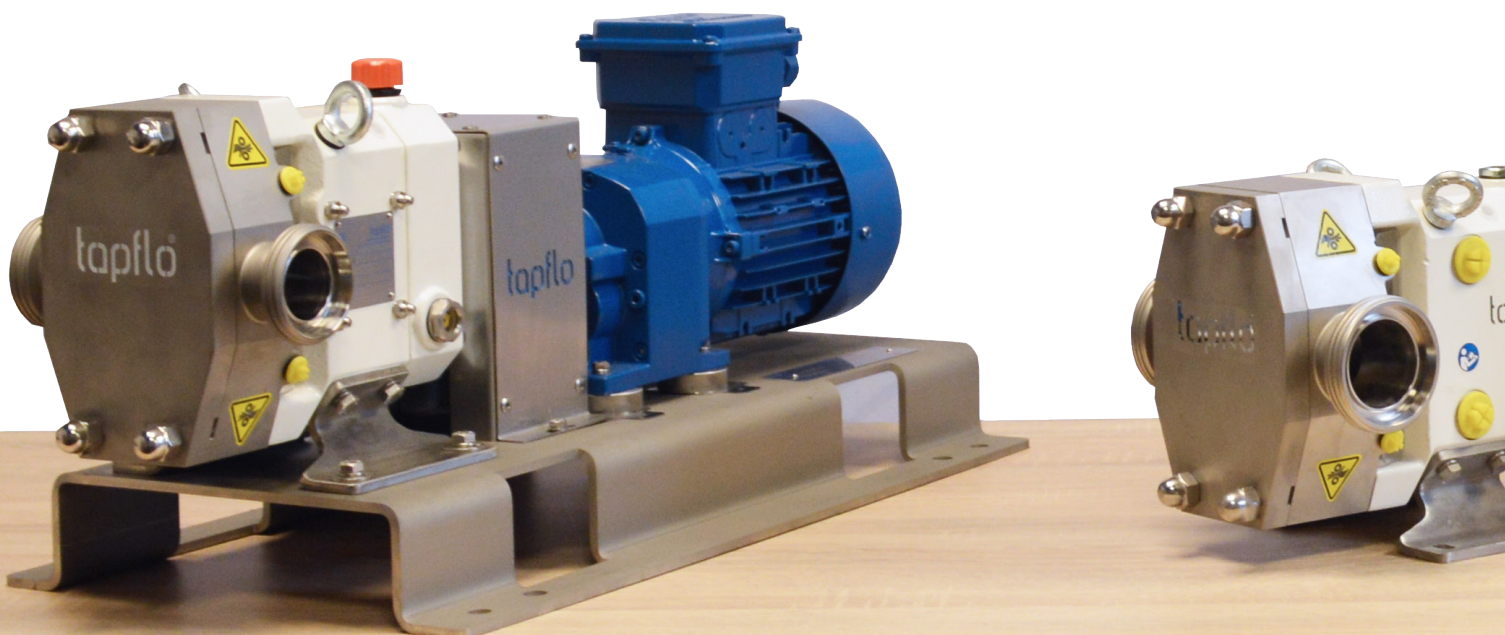
- Designed for safe and efficient transfer of chemically corrosive materials
- Hermetic system & Sealless in design
- Features magnetic couplings enhanced by a unique magnet cage system
- Material options available to enhance temperature handling capabilities
- Dry run protection available
- Direct starting motor
- Flanges available on request
- Reliable design for safe handling of hazardous fluids
- ATEX Explosion-proof options

### COMMON APPLICATIONS

- |                   |                |
|-------------------|----------------|
| • Pharmaceutical  | • Pulp & Paper |
| • Cosmetics       | • Chemical     |
| • Food & Beverage | • Biotech      |



EN 10204



## HYGIENIC LOBE PUMP



### Common Applications

- Bakery Products
- Beverage Production
- Canned Goods
- Confectionary Products
- Cosmetics
- Dairy
- Meat Production
- Pharmaceuticals
- Chemical & General Industry

Industrial

Hygienic

EN 10204



Our Hygienic Lobe Pump is a versatile positive displacement pump widely used in the Hygienic processing industry. Unlike Gear Pumps, **the LPX features lobes that don't physically touch, offering significant advantages for specific media.** The LPX is perfect for pumping low and high-viscosity products gently and with minimal shear forces.

**Designed for energy efficiency, this pump boasts special rotor-shaft mounting for accurate positioning and a backlash-free connection.** This design feature allows for lubrication and accounts for thermal expansion. With the unique gear housing design, cross-contamination of the pumped product with gear oils is eliminated, ensuring clean and hygienic operation.

Technical Data	Specification
Max. Flow (m <sup>3</sup> /hr)	82m <sup>3</sup> hr
Max Speed (rpm)	1200 rpm
Max Operating Pressure (Bar)	10 Bar
Max Particle Size (mm)	3 – 15mm (depending on pump model)
Temperature (°C)	100°C
Rotor Type	Lobe, manufactured from Stainless Steel AISI 316L
Casing & Cover Material	Stainless Steel AISI 316L
Mechanical Seal Material	SiC/SiC

## INDUSTRIAL RUBBER ROTARY LOBE PUMP



### Common Applications

- Industrial
- Water Treatment
- Petrochemical
- Anaerobic Digestion
- Marine

Industrial



Our Industrial Rubber Rotary Lobe Pump is an Industrial Pump designed to **transfer viscous, fibrous, abrasive and solid-laden products.**

Featuring reversible rotary design and rubber lobes, this self-priming pump offers exceptional performance a range of Industrial applications. **Considered a viable alternative to Peristaltic and Progressive Cavity Pumps,** the in-line design of the Rotary Lobe Pump allows easy integration into pipework systems. And with solids handling capacity up to 30mm, **reversible operation and 9 sizes available, this ATEX-available pump offers versatility for your operation.**

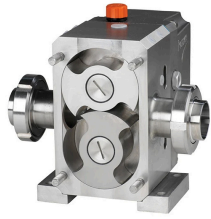
Technical Data	Specification
Max. Flow (m <sup>3</sup> /hr)	300m <sup>3</sup> /hr
Max Head (m)	50m
Max Temperature (°C)	40°C
Housing	GG30 Cast Iron
Lobes	Cast Iron coated in NBR, SBR, XNBR, EPDM and FPM
Shoulders/Wear	Wear-resistant Steel (400 HB)
Shaft Seals	Double Radial Seals, Grease Lubricated & sliding on Hardened Bushes. Standard Mech Seals or Reinforced Seals (prepared to withstand higher operating pressures; equipped with a flushing system) on request
Manifolds	Galvanised Steel

# EHEDG LOBE PUMP

Industrial

Hygienic

EN 10204



Our EHEDG Lobe Pump is a **highly versatile sanitary solution designed for the Food, Cosmetic and Pharmaceutical industries**. Featuring **CIP and SIP** systems for optimal cleaning and sterilisation, this EHEDG-certified pump meets the highest hygiene standards.

Engineered from Cast Stainless Steel AISI 316L, this pump provides increased corrosion resistance for hygienic and sanitary applications, while the Duplex Stainless Steel 1.4462 shafts ensure extra rigidity during operation. **For added versatility in your operation, this pump can be mounted horizontally or vertically (self-draining when vertical), and is ATEX-available for use in hazardous environments.**

## Common Applications

- Dairy Products
- Bakery Products
- Beverages
- Cosmetics Products
- Meat Products
- Egg Products
- Viscous Food Products
- Starch Products

Technical Data	Specification
<b>Max. Flow (m<sup>3</sup>/hr)</b>	110 m <sup>3</sup> /hr
<b>Max Head (m)</b>	150 meters (250 meters upon request)
<b>Max Viscosity</b>	<1'000'000 cPs
<b>Max Temperature</b>	140°C
<b>Max Solids Passage</b>	60 mm – Model & Screw Type Specific
<b>Lobes</b>	Bi-Wing or Quattro Lobe
<b>Connections</b>	¾" – 4"
<b>Shaft Sealing</b>	Single mech. seal SIC/SIC or TC/TC Double mech. seal SIC/SIC or TC/TCWDR Lip Seal Single O-ring Double O-ring with quench
<b>Connection Types</b>	Couplings: DIN11851, DIN11864-1, SMS1145 Flanges: EN1092-1, Rectangular, DIN11864-2, ANSI Tri-Clamps: ISO2852, DIN32676, DIN11864-3
<b>Sealing Materials</b>	EPDM, Viton, NBR, Teflon, KALREZ, e.g. according to FDA
<b>Wetted Parts</b>	AISI 316L (AISI 316L Mo Ni or Hastelloy CX2MW N26022 upon request)
<b>Surface Roughness</b>	<0.8 Micron (Std.), <0.5 upon request (Mechanical & Electro-Polished)
<b>Hardening</b>	Hard Inchromizing & Plasma Nitriding (Optional)
<b>Drives</b>	Standard: IEC, IE2, B3/B5, IP55, isold. F, PTC Optional: IE3, ATEX, CSA/UL, Decentralised variable speed drive

# tapflo<sup>®</sup>

[www.tapflopumps.co.uk](http://www.tapflopumps.co.uk)

+44 2380 252 325

[sales@tapflopumps.co.uk](mailto:sales@tapflopumps.co.uk)

